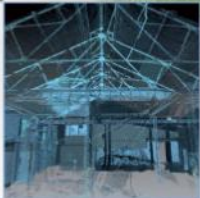


# Glen Turret, NE of Roy Bridge, Lochaber Archaeological Survey Report

AOC 70018  
6<sup>th</sup> June 2016



**AOC**  
Archaeology  
Group



ARCHAEOLOGY

HERITAGE

CONSERVATION

## Glen Turret, NE of Roy Bridge, Lochaber Archaeological Survey Report

---

On Behalf of:	Lochaber Archaeological Society
National Grid Reference (NGR):	NN 338 937
AOC Project No:	70018
Prepared by:	Mary Peteranna
Illustrations by:	Mary Peteranna
Date of Fieldwork:	25 <sup>th</sup> May 2016
Date of Report:	6 <sup>th</sup> June 2016
OASIS No.	aocarcha1-254332

This document has been prepared in accordance with AOC standard operating procedures.

Authors: M Peteranna

Date: 07/06/2016

Approved by: L Fraser

Date: 07/06/2016

**Enquiries to:** AOC Archaeology Group  
Ardyne Studio  
Bank Street  
Cromarty  
Ross-shire  
IV11 8YE

**Mob.** 07972 259255  
**Tel.** 01381 600650  
**E-mail** [inverness@aocarchaeology.com](mailto:inverness@aocarchaeology.com)



## Contents

	Page
List of illustrations .....	2
List of plates .....	2
List of appendices .....	2
Abstract.....	3
Introduction .....	4
Project Background .....	4
Character of the Study Area.....	4
Desk-based Assessment .....	4
Cartographic Sources.....	6
Aerial Imagery .....	9
Historic Environment Sources.....	9
Aims of the Survey.....	9
Survey Methodology .....	11
Results .....	11
Conclusions.....	12
References.....	17

### List of illustrations

Figure 1	Location of the survey area
Figure 2	Excerpt of William Roy's mapping from 1747-52 showing Glen Turret
Figure 3	Excerpt of the 1 <sup>st</sup> edition 1872 Ordnance Survey map
Figure 4	Excerpt of the 2 <sup>nd</sup> edition 1903 Ordnance Survey map
Figure 5	Excerpt of the Bing satellite imagery showing the possible circular
Figure 6	Location of archaeological sites

### List of plates

Plate 1	Looking NW over the south half of the survey area, the location of Site 1 is in the centre
Plate 2	Looking E over Site 1, a low circular turf bank
Plate 3	Looking NE over Site 2, linear turf banks and ditches on a low river terrace
Plate 4	View SW over the sheep pen, Site 3 (Site 4 not visible in back)
Plate 5	Site 5, a stone/turf shieling, facing S
Plate 6	Site 9, substantial turf banks of a farmstead, facing NW
Plate 7	Site 14, remains of a building, facing N
Plate 8	Looking NE possible kiln, Site 16
Plate 9	WNW view over enclosure Site 12, with Site 9/10 in the centre left of image

### List of appendices

Appendix 1	Gazetteer of Archaeological Sites
Appendix 2	Index of Photographs

## **Abstract**

---

This report is a brief summary of the results of an initial walkover survey conducted in Glen Turret by the Lochaber Archaeological Society and AOC Archaeology. Desk-based study of the landscape had suggested that little or no archaeological survey had been undertaken in Glen Turret, where aerial photography and historical mapping showed there to be potential for significant unrecorded sites.

An initial day of survey in Glen Turret has identified significant, previously unrecorded sites, including one possible prehistoric roundhouse, three farmsteads pre-dating the 19<sup>th</sup> century settlement, a group of shielings and other post-medieval buildings present on the site of a recorded 19<sup>th</sup> century sheep farm.

## Introduction

1. An archaeological walkover survey was conducted by Lochaber Archaeological Society and AOC Archaeology as part of an initial study of the Glen Turret landscape, which appeared to have undergone no or very little archaeological study in the past. In particular, the survey aimed to ground-truth the location of several possible sites noted on modern aerial imagery.

## Project Background

2. The archaeological walkover survey area was identified by the Lochaber Archaeological Society as a potential study area due to the lack of previous work in the area. The present survey was undertaken as a 1 day initial investigation of the landscape, to ground-truth a possible prehistoric site and to identify the potential for further archaeological remains in the landscape.
3. Prior to survey, a desk-based study of the surrounding landscape was undertaken to identify any previously known archaeological sites within the area and to assess its archaeological potential. Historical mapping showed the presence of sheep farm enclosures and pens which aerial imagery showed a possible hut circle present in the survey area.

## Character of the Study Area

4. Glen Turret is located at the northeast end of Glen Roy, a well-known landscape for the geomorphological conditions, the 'parallel roads' caused by glaciation. Glen Turret runs along the River Turret (Figure 1) northwest from Brae Roy Lodge, near the northeast end of Glen Roy. The glen is primarily characterised by a wide U-shaped valley surrounded by rounded hills to northeast, southwest and northwest. There is improved ground along the river terraces, most extensive on the east side of the river.

## Desk-based Assessment

5. A desk-based assessment was conducted prior to commencement of the survey in order to assess the archaeological potential of the area based on previously recorded sites and any historical documentation. A check of archaeological records and historical maps was conducted using the Highland Historic Environment Record, National Monuments Record of Scotland (NMRS) and the National Library of Scotland (NLS). There was one previously recorded site noted in Glen Turret, while Ordnance Survey mapping showed significant post-medieval infrastructure.
6. In the Old Statistical Account (1791-99), Rev Thomas Ross described the parish of Kilmonivaig. He states that 'the whole parish is more suited to grazing, particularly sheep-farming' and that 'the only crops are barley, oats and potatoes.' Ross also goes into detail about the parallel roads, describing them as 'one of the most stupendous monuments of human industry.' He states that the natives referred to the roads as *Fingalian roads*, built by the Fingalians to facilitate hunting in ancient times for the pursuance of deer.



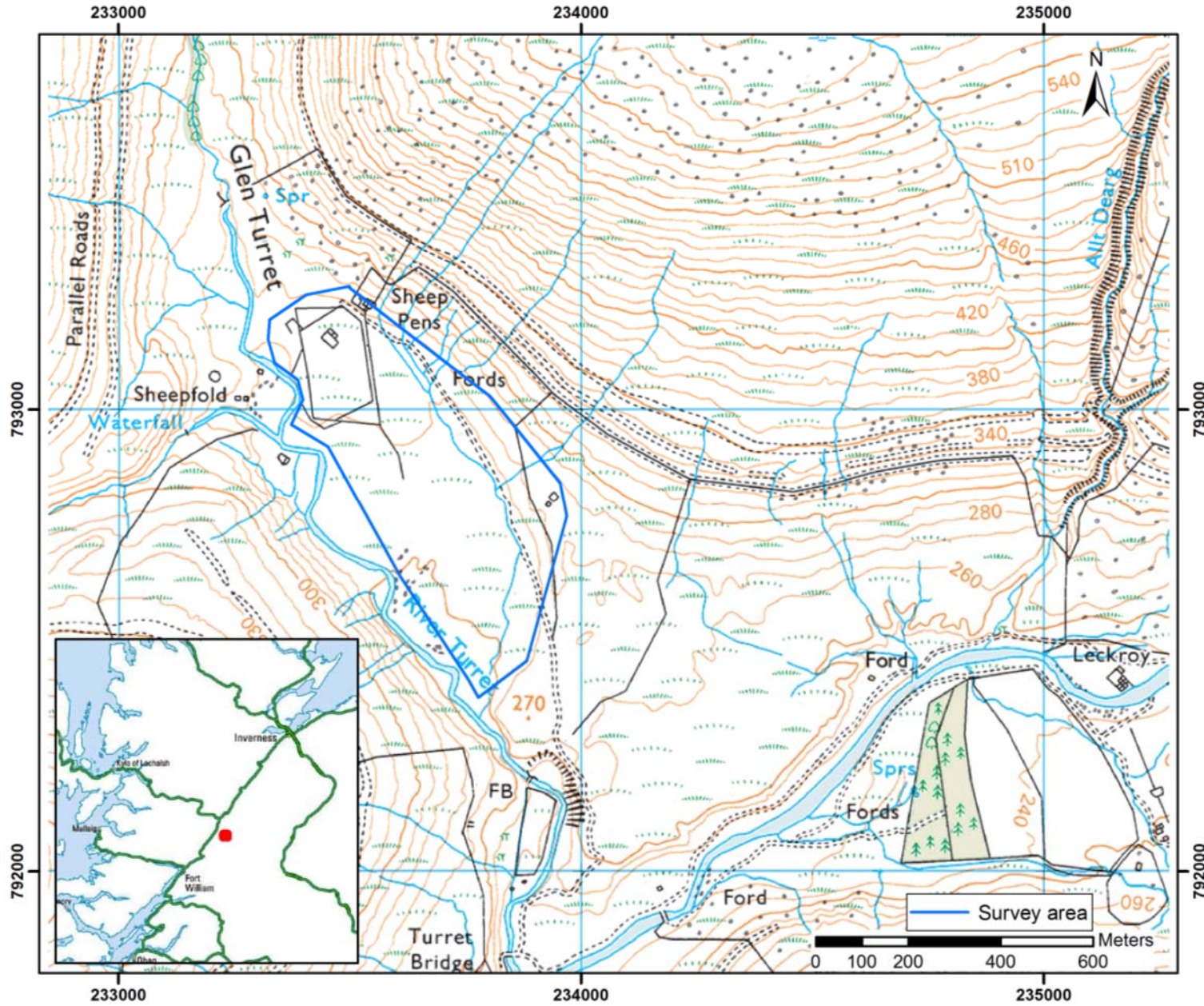


Figure 1  
Location of the survey area

## Cartographic Sources

7. Historical maps were consulted at the National Library of Scotland (NLS 2016) online. The following maps provided information about the survey area:

a) **William Roy's Military Map of Scotland 1747-1752**

Roy's map (Figure 2) depicts substantial settlement in Glen Turret. Three areas of built settlement are depicted within ground containing rig and furrow cultivation. The settlement is shown in a group on both sides of the River Turret near the junction with the Allt a' Chomhlain.

a) **First Edition 6-inch-to-the-mile Ordnance Survey map: Inverness-shire (Mainland), Sheet CXIII  
Survey date: 1870 Publication date: 1872**

In the location of the area surveyed, this map (Figure 3) shows an area of improved ground on the east and west banks of the River Turret at the junction with the Allt a' Chomhlain, where there is a footbridge. Within the improved ground, there is a large subrectangular stock enclosure with a sheepfold to the NE side. A linear boundary dyke runs from NE side of the sheepfold and then turns NW and SW to enclose an area on the E side of the river.

Attached to the SW side of the stock enclosure is a single roofed building with an attached pen to the N side. A track runs SE from the building to *Leichroy* and there is a square enclosure shown on the N side of the track. Remnants of boundary dykes are shown enclosing the lower ground on both sides of the river to the south side of the large stock enclosure. On the W side of the river, to the S of the roofed building, three unroofed buildings, one with an attached enclosure, are shown. To the northwest of this, a square sheepfold is shown attached to the end of one of the parallel roads.

Beyond the area of the present survey, at the S end of the glen, there is a school depicted on the N side of Turret Bridge. *Dalriach Lodge* is shown (present-day Brae Roy Lodge) and there are a series of roofed buildings, including a kennel, and a sheepfold shown here.

Beyond the survey area, at the N end of Glen Turret, there are two square sheepfolds shown, one with an attached pen, and a group of possible unroofed buildings.

b) **Second Edition 6-inch-to-the-mile Ordnance Survey map: Inverness-shire (Mainland), Sheet CXIII  
Publication date: 1903 Revision date: 1899**

In the location of the area surveyed, this map (Figure 4) shows the area of improved ground along the river similar to what is shown on the 1<sup>st</sup> Edition map, with a few changes. The roofed building attached to the SW side of the large enclosure is shown as having been extended, although only the W end of it is now roofed. The buildings on the W side of the river, to the S of the roofed building, are no longer shown, although the enclosure is depicted. The square sheepfold to the northwest of this is no longer shown, although a circular sheepfold is depicted on the W side of the river, as well as a boundary dyke running SE from the footbridge.

Beyond the survey area, at the S end of the glen, the school is no longer depicted on the N side of Turret Bridge. The name of *Brae Roy Lodge* is also now being used for the holding, which now contains several additional roofed buildings.



Beyond the survey area, at the N end of Glen Turret, the two sheepfolds are still shown, one of which is depicted *Old Sheepfold* and the other of which now contains a larger square enclosure, as is the group of possible unroofed buildings. A footbridge and a roofed building on the E side of the burn are also now shown to the south of the sheepfolds.

- c) The current Ordnance Survey (OS) 1:25000 map depicts the remnants of the large stock enclosure, shown as two overlapping phases of walling. *Sheep pens* are shown to the NE side of the large enclosure, as is the boundary wall running off the NE and NW side of it. Inside the large enclosure, an unroofed building with an attached pen on the SW side is shown, as is a pen attached to the NW side of the enclosure.

To the SW of the large enclosure on the W side of the river, an unroofed building with an attached pen to the NE side is shown, as is the circular sheepfold to the NW of it. The square sheepfold to the SE of the large enclosure is also shown, with a square unroofed building on the SW side of it.

Remnants of boundary dykes are shown in different locations on the map to those depicted on the 1<sup>st</sup> and 2<sup>nd</sup> editions. At the N end of the glen, there is no note made of the sheepfolds from the earlier editions.

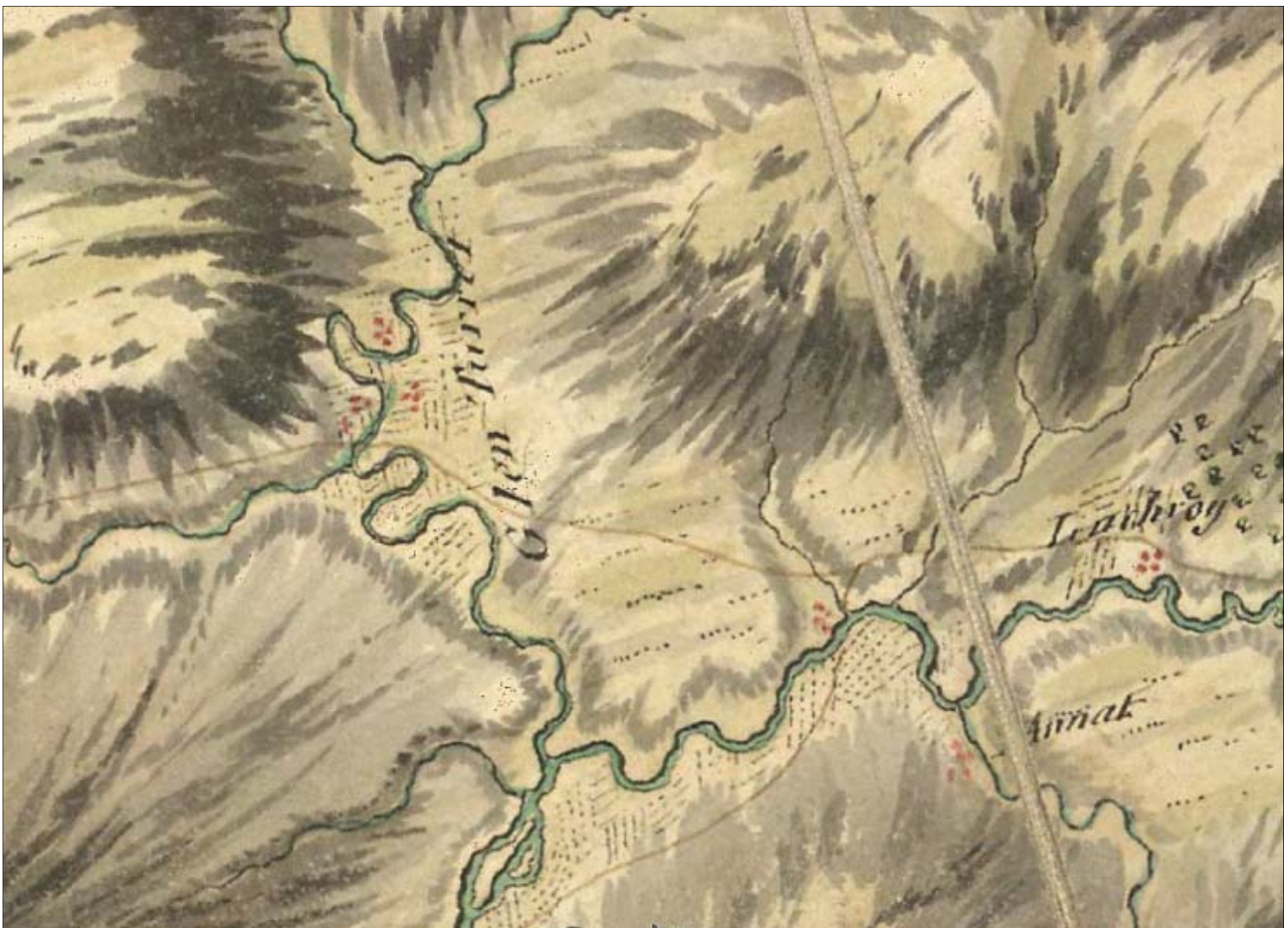


Figure 2 Excerpt of William Roy's mapping from 1747-52 showing Glen Turret (© NLS)



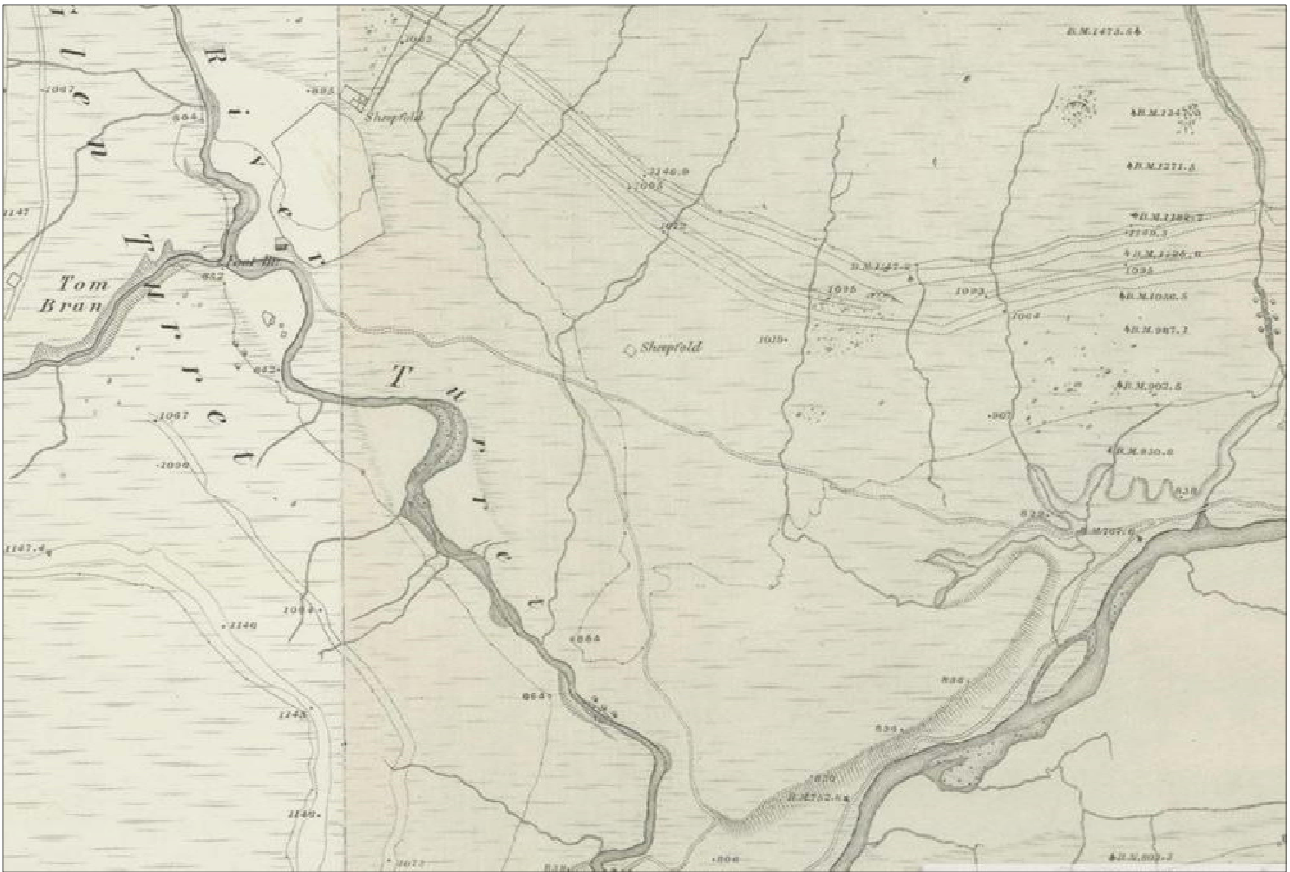


Figure 3 Excerpt of the 1<sup>st</sup> edition 1872 Ordnance Survey map in the location of the survey area (© NLS)

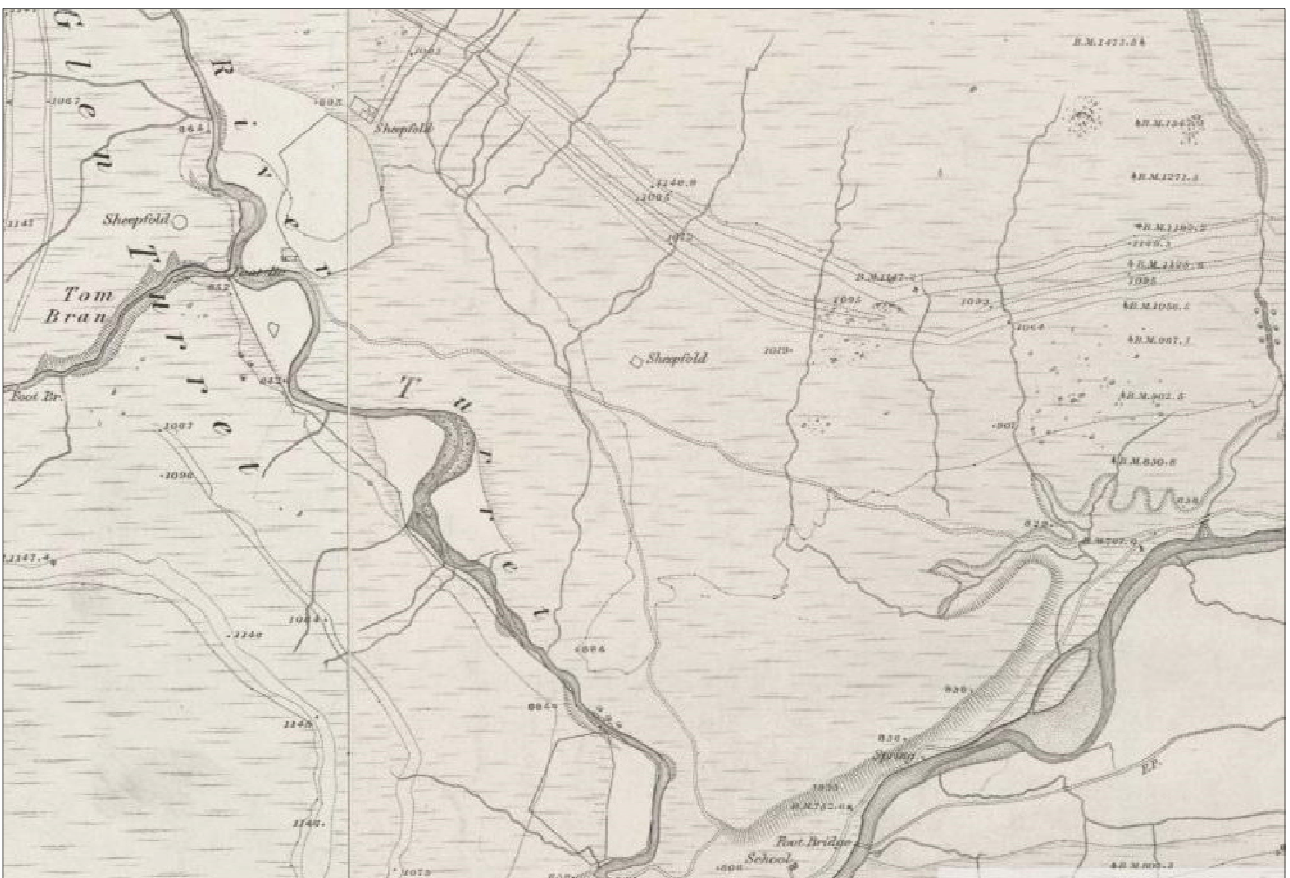


Figure 4 Excerpt of the 2<sup>nd</sup> edition 1903 Ordnance Survey map in the location of the survey area (© NLS)



Figure 5 Excerpt of the Bing satellite imagery showing the possible circular structure(© Bing maps)

### Aerial Imagery

8. Google and Bing satellite imagery was inspected. The images clearly showed the improved ground, several of the enclosures and possible building sites. In particular, a circular site (Figure 5) was noted as a possible prehistoric roundhouse or enclosure.

### Historic Environment Sources

9. A full search of the Highland Council Historic Environment Record (HER) was conducted. One site was noted adjacent to the survey area and one site was noted at the south end of Glen Turret.

MHG26974

NN 3337 9288

Farmstead, Glen Turret

A farmstead, comprising two unroofed buildings and two enclosures is depicted on the 1st edition of the OS 6-inch map (Inverness-shire 1876, sheet cxii). This site is located on the west side of the River Turret.

MHG14496

NN 3385 9181

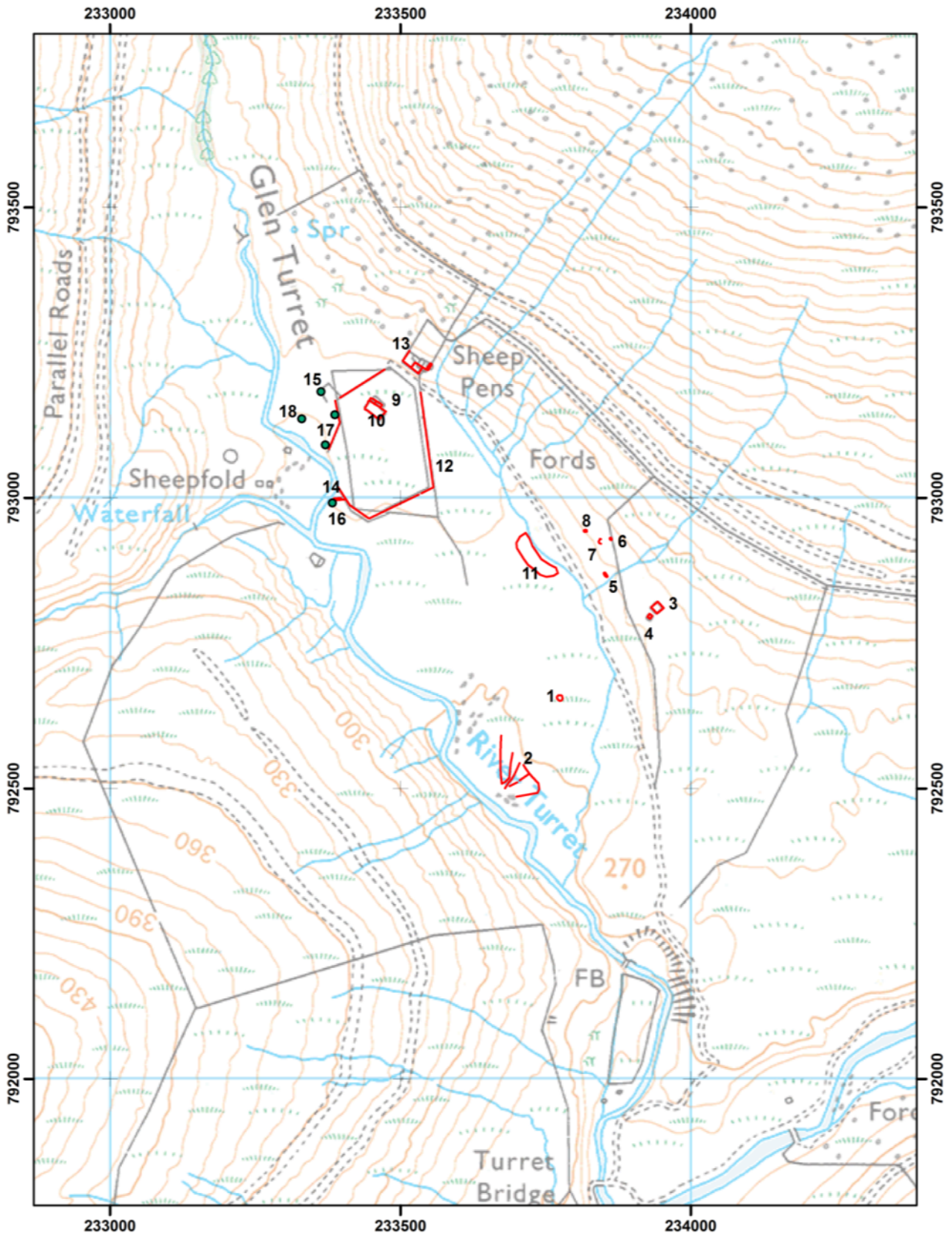
Turret Bridge, Glen Roy

A single span rubble-built bridge measuring approximately 20 ft in length is probably mid-18<sup>th</sup> century in date.

### Aims of the Survey

10. The overall aim of the archaeological walkover survey was to identify the circular site shown on aerial imagery (Figure 5) and to characterise the archaeology of Glen Turret. This would provide baseline information for future studies of the area.





**Glen Turret Archaeological Survey**

**Lochaber Archaeological Society**

**25 May 2016**

Figure 6 Location of archaeological sites

## Survey Methodology

11. Survey of the ground around the stock enclosure and sheep fanks at the centre of Glen Turret was undertaken on the 25<sup>th</sup> May 2016. The weather for the survey was dry and sunny with good archaeological visibility. The ground conditions were dry across the whole of the route. Landscape survey training for the society was provided during this time. Survey for the area was not completed, and there is a need for further survey to complete the records for many of the sites located.
12. Archaeological sites were recorded using high-resolution digital photography and written notes on pro-forma sheets. Individual site locations were recorded, using ArcPad GIS software on a handheld Windows Mobile-based Archer Field PC capable of sub-metre accuracy.

## Results

13. The walkover survey identified eighteen archaeological sites (Figure 6), all of which were previously unrecorded, and some of which correlate with sites shown on the historical mapping. The Gazetteer of Archaeological Sites (Appendix 1) provides the full details of the sites identified and recorded during the survey. Seven of these sites were identified but not surveyed during this time.
14. Site 1 (Plates 1 – 2), a circular feature identified on modern aerial imagery, had been targeted prior to survey. During fieldwork, it was located at the centre of a flat, boggy, heather-covered terrace. The structure consisted of the mostly degraded remains of a circular turf bank, enclosing an area 8m in diameter. There was no visible entrance and a very narrow ditch ran off the southeast side of it. While there were no distinguishing structural features identified, the site is deemed to be of potential prehistoric date, resembling the size and shape of many hut circle sites. The condition of and the location of the site, within present boggy land, would suggest that it would not have been built on such ground during the more recent centuries. It is not shown on historical mapping, and the extensive settlement in the glen would suggest that, if the site had once comprised stone-built walls, the stone may have been robbed for later buildings or walls.
15. Site 2 (Plate 3) consisted of linear turf banks, running parallel to narrow ditches. While they appeared to be related to drainage construction on a low river terrace, the better preserved of the banks showed that they had been deliberately well-constructed, possibly suggesting a use for plot separation related to cultivation/irrigation. This theory was inconclusive and a use for drainage remains the most likely answer.
16. Site 3 (Plate 4) is a stone-built, square stock enclosure, with a small concrete base, Site 4, to the southwest side of it. The enclosure had been built prior to 1870 as per the 1<sup>st</sup> Edition mapping. To the northwest of Site 3, a group of mostly degraded stone/turf-built shielings was identified on small terraces built into the SW-facing hillside to the northeast of Site 1. Sites 5-8 comprised low, suboval banks, with Site 5 (Plate 5) being the better preserved of the group. These are not shown on the historical mapping, but probably predate the sheep farm represented on the 1870 map. Site 11 was an area of improved ground not yet taken over by heather, where rig and furrow was noted.
17. Site 9 (Plate 6) and Site 10 consisted of subrectangular turf banks forming the remains of a building with two units and an attached enclosure on the southwest side. It is not shown on the 1<sup>st</sup> edition OS map and represents the remains of a farmstead that had been abandoned well before the sheep farm and stock enclosure were built. Site 15, which was not surveyed but identified to the northwest of Site 9/10, is a similar site, as are the remains of an L-shaped turf bank, Site 18, noted nearby. Furthermore, the unsurveyed structure shown on



the east side of the river to the S of Site 16 (Figure 5) compares similarly to these sites, which are all likely to be contemporary. These structures are probably the surviving remnants of those shown on Roy's mid-18<sup>th</sup> century map, indicating that settlement here was well-established by this time.

18. Sites **12-14** and **16** were rapidly noted, though not surveyed and form the sites relating the sheep farm shown on the 1<sup>st</sup> and 2<sup>nd</sup> edition OS maps. Site **12** consists of the large stock enclosure, while Site **13** formed the sheep fank and pens to the northeast side of it. Site **17** consisted of two large pits, possible tattie storage pits, located next to the enclosure wall. Site **14** (Plate 7) appeared as the ruins of a stone-built farmstead attached to the east side of the enclosure wall. At the base of the hill to the south of Site 14, structural remains were noted at Site **16** (Plate 8), which had been built into the hillside. Only limited structural evidence was visible, indicating that the site may have been a kiln. Site 14 was in use during the second half of the 19<sup>th</sup> century, as indicated by the historical maps.
19. There were further structures and boundary walls noted around Sites **12** and **13** and to the north of them. These were not recorded during the survey.

## Conclusions

20. The survey identified significant late medieval and post-medieval settlement remains that had not been previously recorded in Glen Turret. A possible prehistoric hut circle seen on aerial imagery was also found.
21. The rapid survey has proven that the archaeology of the glen contains remnants of several phases of continuous occupation, beginning with settlement predating the mid-1700s up until a change of use for large scale sheep farming by the second half of the 19<sup>th</sup> century. Further work would be beneficial to fully characterise the landscape.



Plate 1 Looking NW over the south half of the survey area, the location of Site 1 is in the centre



*Plate 2 Looking E over Site 1, a low circular turf bank*



*Plate 3 Looking NE over Site 2, linear turf banks and ditches on a low river terrace*





*Plate 4 View SW over the sheep pen, Site 3 (Site 4 not visible in back)*



*Plate 5 Site 5,a stone/turf shieling, facing S*





*Plate 6 Site 9, substantial turf banks of a farmstead, facing NW*



*Plate 7 Site 14, remains of a building, facing N*





*Plate 8 Looking NE possible kiln, Site 16*



*Plate 9 WNW view over enclosure Site 12, with Site 9/10 in the centre left of image*

## References

National Map Library of Scotland, 2016. Accessed at <http://maps.nls.uk> on 24<sup>th</sup> May 2016

Ross, Rev T *Old Statistical Account. Account of 1791-99*, vol. 17: Parish of Kilmonivaig accessed 9<sup>th</sup> June 2016 at <http://stat-acc-scot.edina.ac.uk/link/1791-99/Inverness/Kilmonivaig/>

## Appendix 1 Gazetteer of Archaeological Sites

Site No.	Site type	Site name	Description	Alignment	Condition	Period	Ht OD (m)	Easting	Northing
1	Hut circle?	River Turret	Under grass, moss and some heather are the remains of circular turf bank measuring 8m in diameter internally. The banks, which are spread 2.5m-5m wide and stand up to 0.25m max., are mostly stone free. The structure, which is located in the centre of open, boggy, flat ground on a low terrace about the River Turret, is only visible by the change in vegetation over the bank. Running for approx 10m off the SE side is a narrow, hand-cut ditch. There were no structural features to suggest a date or use for the structure, although its size is comparable to many hut circle sites.	-	Very degraded	Prehistoric?	260	233779	792657
2	Banks	River Turret	A group of 5-6 linear turf banks within a curvilinear turf bank are located within an area of improved ground on the east side of River Turret. The well-preserved sections show that the banks, measuring 0.3-0.5m high and 0.5m wide were deliberately built alongside hand-cut ditches, with a spacing of 15m-20m between them. They appear to serve as drainage cuts with deliberate banks, possibly for field separation for planting areas.	NE-SW	Degraded	Post-medieval	250	233694	792521
3	Sheepfold	River Turret	A rectangular stone-built enclosure consists of single skin walls of large stones and boulders 0.5m wide and 0.5-1.5m high. It encloses an area 17m NE-SW by 16m. There is an entrance in the SW wall where a slabbed path leads to Site 4.	NE-SW	Degraded	Post-medieval	275	233948	792816
4	Structure	River Turret	A concrete slab measures 5.2m x 5m. The sides are lined with timber beams. Appears to have formed the base for a structure.	-	Degraded	20th century?	275	233929	792800
5	Shieling	River Turret	On a small terrace under moss and bracken are the low remains of a turf-covered stone/turf subrectangular structure with rounded corners. It measures 5.5m NW-SE by 2.5m internally with banks spread 1-1.5m wide and up to 0.6m high. Possible entrance in NE wall.	NW-SE	Degraded	Unknown	270	233851	792868
6	Shieling	River Turret	On a small terrace under turf, moss and bracken are the very degraded remains of a turf/stone suboval structure measuring approximately 5m NW-SE by 3m overall with banks standing up to 0.25m high. No structural features visible.	NW-SE	Very degraded	Unknown	275	233864	792930

Site No.	Site type	Site name	Description	Alignment	Condition	Period	Ht OD (m)	Easting	Northing
7	Shieling?	River Turret	A platform measuring 6-7m N-S by 2.5m has been formed by building a rubble stone revetment into a W-facing slope, extending 1m wide at the top to 2.5m wide at the base. There are no structural remains visible on the surface of the platform, which probable formed a shieling site.	N-S	Very degraded	Unknown	270	233842	792925
8	Shieling?	River Turret	On a small terrace under turf, moss and bracken are the very degraded remains of a turf/stone suboval bank measuring 5m E-W by 4m. Possible shieling site.	E-W	Very degraded	Unknown	275	233816	792944
9	Building	River Turret	The footings of a rectangular building comprise grass-covered turf/stone banks spread up to 1.5m wide and standing up to 0.8m high. There are two compartments, each measuring 11m NW-SE internally and 6-6.5m wide, and possibly separating a house and byre. There is no visible entrance, but there is an attached enclosure, possibly a kale-yard/garden on the SW side.	NW-SE	Degraded	Late medieval	275	233452	793171
10	Enclosure	River Turret	Grass-covered turf/stone banks form a subrectangular enclosure measuring or kale-yard/garden measuring 33m NW-SE by 17.5m overall. It is attached to the footings of a building.	NW-SE	Degraded	Unknown	270	233469	793142
11	Rig & furrow	River Turret	A small area of improved ground contains the visible remains of wide rig and furrow cultivation.	NW-SE	Degraded	Unknown	270	233754	792865
12	Sheepfold	River Turret	The remains of a well-built stone wall with coping stones encloses an area of approx 200m NW-SE by 180m. It has fallen away due to river erosion on the W side. Not fully surveyed.	NW-SE	Ruinous	Post-medieval	270	233435	793197
13	Sheep fank	River Turret	The remains of stone-built walls form several enclosures for stock management, including a sheep dip. Not surveyed.	NW-SE	Ruinous	Post-medieval	270	233514	793228
14	Building	River Turret	The remains of a stone-built building comprise two compartments built into the sheepfold, Site 12, at the E end. It has begun to fall away at the W side due to river erosion. Not surveyed.	E-W	Degraded	Post-medieval	270	233386	792996
15	Building	River Turret	The grass-covered remains of turf/stone banks form the remains of a house/byre and attached enclosure similar to Site 9/10. Not surveyed	-	Very degraded	Unknown	270	233363	793183
16	Building - kiln?	River Turret	The remains of a stone-built structure revetted into the hillside below the S side of Site 14. Probable kiln, not surveyed	-	Very degraded	Post-medieval	270	233383	792991



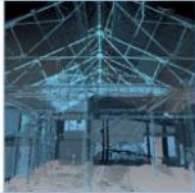
Site No.	Site type	Site name	Description	Alignment	Condition	Period	Ht OD (m)	Easting	Northing
17	Pits	River Turret	Two large pits were noted on the NW side of the sheep fank, Site 12. Storage pits? Not surveyed.	-	Very degraded	Post-medieval	270	233371	793091
18	Banks	River Turret	The remains of an L-shaped section of turf/stone walling were noted on a lower river terrace. Possible remnants of an enclosure, partially eroded. Not surveyed.	-	Very degraded	Unknown	270	233330	793136

## Appendix 2 Index of Photographs

Photo No.	Site No.	Direction facing	Description	Taken by	Date
1	-	NW	Looking NW over the landscape around Site 1 (centre of image)	MKP	25/05/2016
2	-	NW	Looking NW over the landscape around Site 1 (centre of image)	MKP	25/05/2016
3	1	W	Survey in progress on Site 1, faintly visible as slightly raised bank	MKP	25/05/2016
4	1	N	Site 1, visible as circular patch of lighter-coloured vegetation	MKP	25/05/2016
5	1	E	Site 1, visible as circular patch of lighter-coloured vegetation, inside the group of surveyors	MKP	25/05/2016
6	1	E	Site 1, visible as circular patch of lighter-coloured vegetation, inside the group of surveyors	MKP	25/05/2016
7	1	E	Site 1, visible as circular patch of lighter-coloured vegetation, inside the group of surveyors	MKP	25/05/2016
8	1	E	Site 1, visible as circular patch of lighter-coloured vegetation, inside the group of surveyors	MKP	25/05/2016
9	1	N	Site 1, visible as circular patch of lighter-coloured vegetation	MKP	25/05/2016
10	1	N	Site 1, visible as circular patch of lighter-coloured vegetation	MKP	25/05/2016
11	1	N	Site 1, visible as circular patch of lighter-coloured vegetation	MKP	25/05/2016
12	2	NE	Looking over linear banks, Site 2	MKP	25/05/2016
13	2	NE	Looking over linear banks, Site 2	MKP	25/05/2016
14	2	N	Looking over linear banks, Site 2	MKP	25/05/2016
15	2	NNE	Looking over linear banks, Site 2	MKP	25/05/2016
16	2	NNE	Looking over linear banks, Site 2	MKP	25/05/2016
17	-	SSE	Landscape at S end of Glen Turret, showing landslip	MKP	25/05/2016
18	3, 4	SW	Sheepfold, Site 3, with Site 4 platform in back	MKP	25/05/2016
19	3	SW	Sheepfold, Site 3, with Site 4 platform in back	MKP	25/05/2016
20	3	NE	Sheepfold, Site 3, showing stone path leading to Site 4	MKP	25/05/2016
21	5	SW	Shieling, Site 5	MKP	25/05/2016
22	5	S	Shieling, Site 5	MKP	25/05/2016
23	6	SW	Shieling site, Site 6	MKP	25/05/2016
24	7	N	Built revetment (left) forming platform for probable shieling site, Site 7	MKP	25/05/2016
25	11	W	Looking over area of rig and furrow at centre of images	MKP	25/05/2016
26	9, 10	SW	Location of farmstead, Sites 9 - 10	MKP	25/05/2016
27	9, 10, 12	SW	Panorama (skewed) of sheepfank Site 12 with earlier farmstead Sites 9 - 10 at centre	MKP	25/05/2016
28	9, 10, 12	WSW	Looking over sheepfold wall Site 12, with earlier farmstead Sites 9 - 10 shown in green, grassy area	MKP	25/05/2016

Photo No.	Site No.	Direction facing	Description	Taken by	Date
29	9, 10, 12	SW	Looking over sheepfold wall Site 12, with earlier farmstead Sites 9 - 10 shown in green, grassy area	MKP	25/05/2016
30	9, 10, 12	SW	Looking over sheepfold wall Site 12, with earlier farmstead Sites 9 - 10 shown in green, grassy area	MKP	25/05/2016
31	9, 10, 12	SW	Looking over S end of sheepfold wall Site 12	MKP	25/05/2016
32	9, 10	W	Survey in progress on Sites 9 - 10	MKP	25/05/2016
33	9	NW	Looking over Site 9 during survey	MKP	25/05/2016
34	9	SE	Looking over Site 9 during survey	MKP	25/05/2016
35	10	NW	Looking over the enclosure, Site 10	MKP	25/05/2016
36	14	NE	Ruins of building Site 14, attached to sheep fank Site 12	MKP	25/05/2016
37	14	E	Ruins of building Site 14, attached to sheep fank Site 12	MKP	25/05/2016
38	14	NNW	Ruins of building Site 14, attached to sheep fank Site 12	MKP	25/05/2016
39	16	NE	Structure revetted into hill, possible kiln, Site 16	MKP	25/05/2016
40	-	S	Looking S over landscape in Glen Turret from Site 14, landslip in back	MKP	25/05/2016
41	12, 13	N	Looking over walls of sheep fank, with sheep pens Site 13 in back	MKP	25/05/2016
42	12	NE	Looking over walls of sheep fank, Site 12	MKP	25/05/2016
43	-	-	View of the parallel roads in Glen Roy	MKP	25/05/2016
44	-	-	View of the parallel roads in Glen Roy	MKP	25/05/2016
45	-	-	View of the parallel roads in Glen Roy	MKP	25/05/2016
46	-	-	View of the parallel roads in Glen Roy	MKP	25/05/2016





AOC Archaeology (Inverness) Ardyne Studio Bank Street Cromarty Ross-shire IV11 8YE  
| tel: 01381 600 650 | mob: 07972 259 255 | e-mail: [inverness@aocarchaeology.com](mailto:inverness@aocarchaeology.com)

[www.aocarchaeology.com](http://www.aocarchaeology.com)